

# Welcome to the Summit Bechtel Reserve

Updated: 11/9/2021



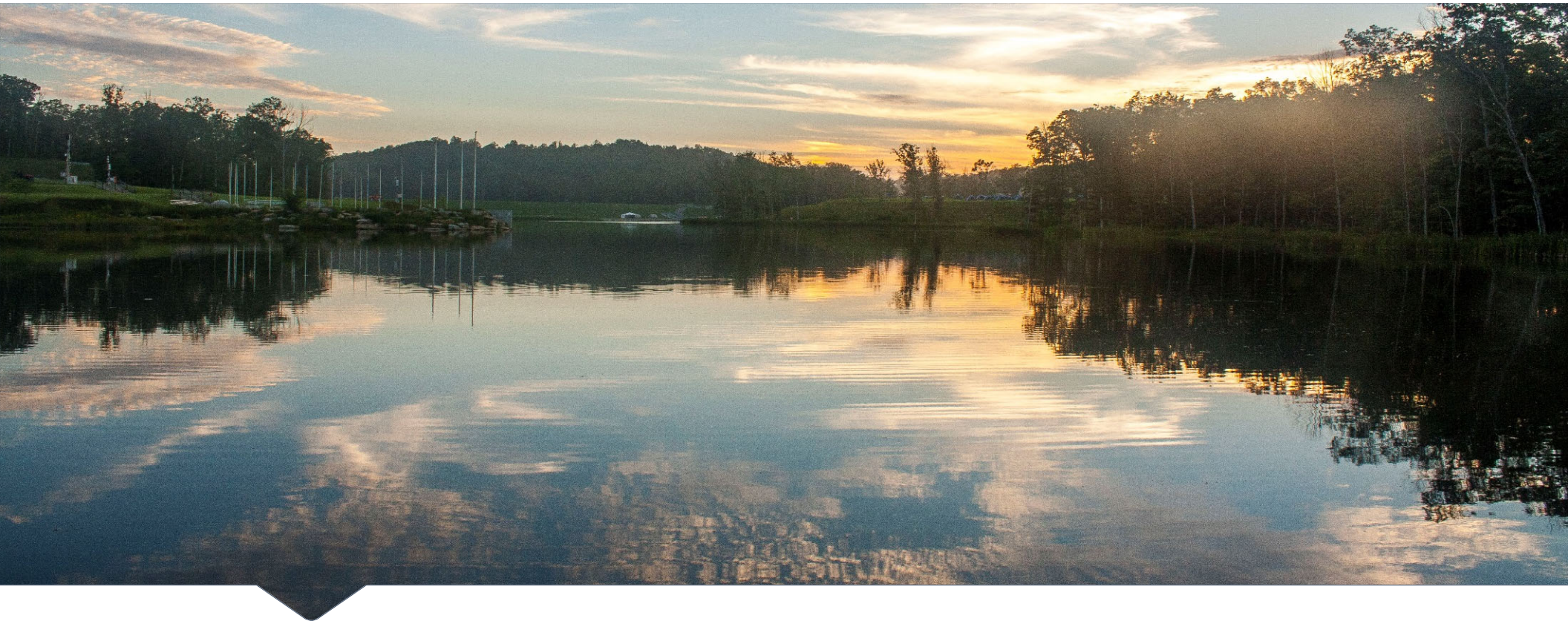
**Summit**  
BECHTEL RESERVE™

# The Paul R. Christen National High Adventure Base



Updated: 11/9/2021





## **Q & A Session**

To Send a question click on “Chat” at the bottom of the screen in the Webinar tool bar. This activates the Chat Function. Then type your question. Please send questions to “everyone.”



Get ready for adventure with  
Custom Gear + other cool stuff swag!



SCAN ME

- [gardengroundoutfitters.com](http://gardengroundoutfitters.com)
- [store.summitbsa.org](http://store.summitbsa.org)

# What is the Summit Bechtel Reserve?

## High Adventure Base

- Skill Development
- Challenge
- Confidence-Building



## Scout Camp

- Activity Exploration
- Advancement
- Scouting Traditions



## Training & Leadership Center

- Unit/Council Support
- Credentials & Qualifications
- Subject Mastery



## Family Adventure Camp

- Family Centric
- Fun & Excitement
- Exploration



# Covid-19 Update

## COVID-19 Operational Adaptations

- Summit representatives are in close contact with state and local health officials to review the SBR COVID-19 mitigation and operating plan. We will obtain their suggestions and input and operate within state guidelines.
- We will continue to refine the plan. However, please expect the following or something similar to be part of your 2022 camp experience:
  - A pre-screening process that takes place over several days before you depart for camp.
  - A re-screening upon arrival at camp.
  - Daily wellness checks at the troop or crew campsite by troop/crew leadership.
  - Face coverings will be worn during all appropriate activities. Your troop or crew may want to get a jump on it and make troop face masks or buffs.
  - Physical distancing.
- We are consistently reviewing each activity utilizing CDC guidelines and the State of West Virginia Guidelines to determine how to operate each activity within the guidelines currently available.
- Procedures will be updated to keep participants safe
- Details on operations of the Summit can be found at [www.summitbsa.org/newnormal](http://www.summitbsa.org/newnormal)





# The Paul R. Christen National High Adventure Base

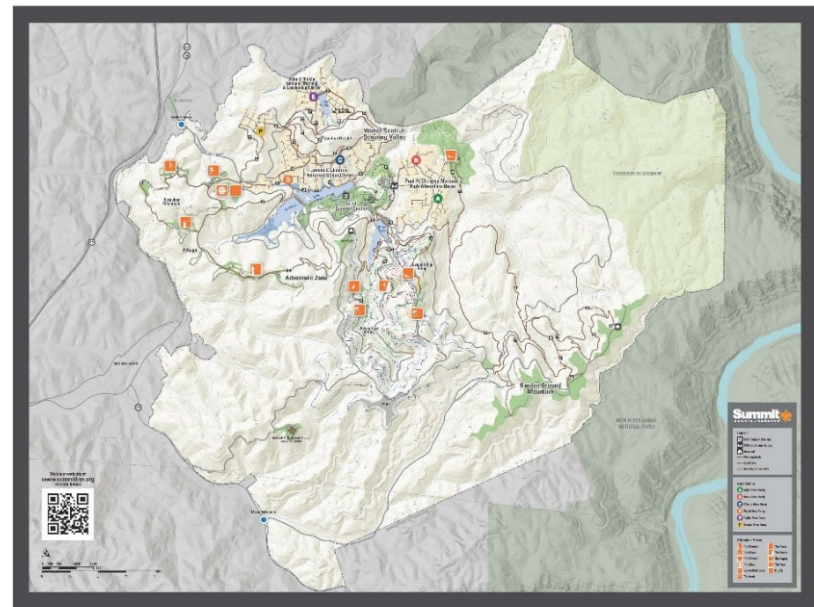


- Using Adventure Sports and Experiences to build:
  - Competence
  - Confidence
  - Connections
  - Caring
  - Character

# Program Facilities

## High Adventure Program Venues

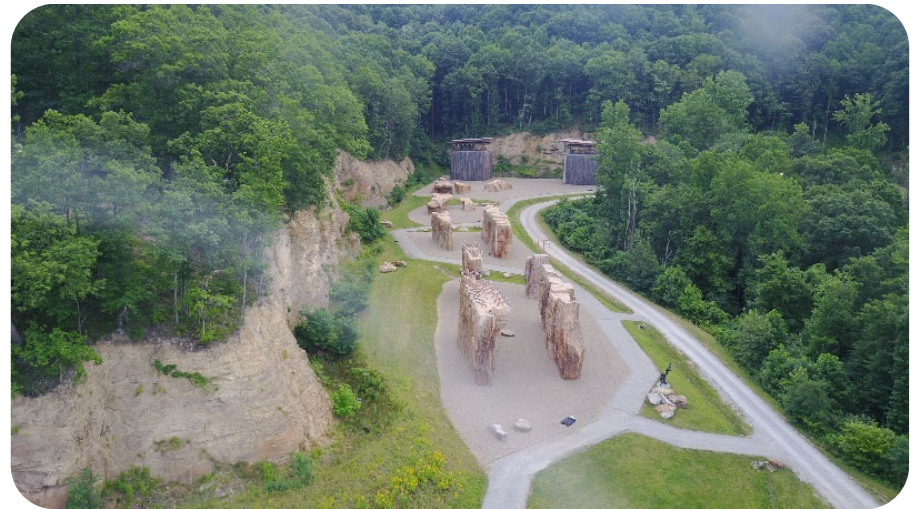
- The Park- Skateboarding
- The Trax- BMX
- The Bows- Archery
- The Barrels- Shooting Sports
- The Rocks- Rock Climbing
- Hunters Hall





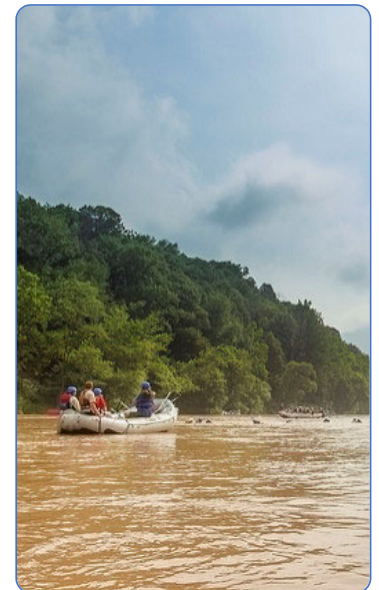
# Program Facilities Continued

- Canopy- Zip Line Canopy Tours
- Low Gear – Mountain Biking
- Goodrich Lake West - Kayaking, SUP
- Big Zip- 3100 foot zipline
- New River Gorge- Whitewater Rafting
- New River Experience
- Bikepacking Experience
- Pack N Paddle Experience
- Marksman Experience



# High Adventure @ The Summit- Summit Experience

- Summit Experience - A little bit of everything!
  - Participants will spend a half day in every high adventure program area
  - A great way to get an introduction to a wide range of adventure sports
  - Groups will camp at the Summit site
  - Utilize the venues on site for a thrilling week
  - Evening Programs in Summit Center
  - A ½ day whitewater rafting trip is included no extra fee.
  - <https://www.summitbsa.org/programs/national-high-adventure-base/summit-experience/>



# Sample Schedule Summit Experience

Summit Experience- ½ day in every High Adventure Program Venue

|     | SUN             | MON                      | TUES     | WED                      | THURS             | FRI                                    | SAT    |
|-----|-----------------|--------------------------|----------|--------------------------|-------------------|--|--------|
| AM  | ARRIVE          | BOWS                     | THE TRAX | LASER-SHOT SKILLS CENTER | THE ROCKS/BIG ZIP | GOODRICH LAKE OR<br>WHITEWATER RAFTING | DEPART |
| PM  | ARRIVE          | BARRELS                  | THE PARK | LOW GEAR                 | CANOPY            | GOODRICH LAKE OR SERVICE               |        |
| EVE | OPENING PROGRAM | SUMMIT CENTER ACTIVITIES |          |                          |                   | CLOSING PROGRAM                        |        |



## Slide 11

---

**WL1**    [@Isaac Colvard] SE Schedule updated  
Walter Lester, 10/7/2021

# High Adventure Experiences

## Trek Experiences

- New River Experience
- Polaris ATV Experience
- Bikepacking Experience
- Marksman Experience
- Pack N' Paddle Experience



## Slide 13

---

**MR1**    [@Walter Lester] [@Isaac Colvard] all my updates are complete i think?  
Matthew Reineck, 10/8/2021



# The New River Experience

- 4 days of “duckie” Kayaking on class I to III rapids
- 1 day of whitewater rafting on class I to IV+ rapids
- Four nights of camping in the gorge.
- 50+ mile Experience
- All necessary program equipment provided. Bring your clothes, sleeping bag, sleeping pad and a mess kit and you are ready to go!
- Reservations are made by the boat. 1 boat = up to 8 people. A 9<sup>th</sup> person can be added for an additional fee.
- <https://www.summitbsa.org/programs/national-high-adventure-base/trek/new-river-trek/>



**Summit**  
HIGH ADVENTURE EXPERIENCES

# The Polaris ATV Experience

- 4 days of ATV trekking on the Summit property
- Friday the group will select an elective
- Fun on the trails and in the mud
- Reservations are made by the crew which can accommodate 8 – 12 people
- Crew is comprised of 8 people, additional people added at \$1,273.75 per person
- Max group size is 12
- <https://www.summitbsa.org/programs/national-high-adventure-base/trek/atv-trek/>

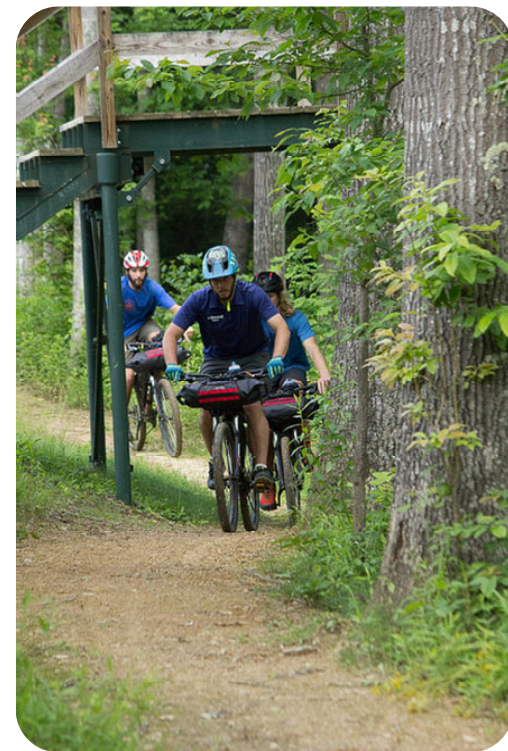


**Summit**  
HIGH ADVENTURE EXPERIENCES



# Bikepacking Experience

- Ride from The Summit through the New River Gorge
- Pack your equipment on your bike
- We provide the program equipment
- 50+ miles
- <https://www.summitbsa.org/programs/national-high-adventure-base/trek/bikepacking/>





# Pack N Paddle Experience

- A challenging 50-mile trek through time
- Let us share our history and our scenic countryside with you
- Carry what you need and live remote from others for self enrichment
- Make connections with others without the hindrance of technology
- Full Day Whitewater Rafting on the New River class I – IV+ rapids.
- Crew size Minimum of 8 and Maximum of 15 per experience
- <https://www.summitbsa.org/programs/national-high-adventure-base/trek/packnpaddle>



**Summit**  
HIGH ADVENTURE EXPERIENCES

# Marksman Experience

- 4 days of shooting sports activities and instructions.
- Rifle, shot gun, pistol (must be 14 and up for pistol)
- Archery, 3-D archery, sporting arrows and crossbow.
- <https://www.summitbsa.org/programs/national-high-adventure-base/trek/marksman>



# Camping Facilities

## HA at The Summit

- Dome Tents
- Cots
- Dinning Flies
- Picnic Tables
- Ambient Temperature Shower houses



## New River Gorge / Backcountry Experiences

- Dome Tents
- No cots- Bring a ground pad
- Dinning Flies
- Latrines
- No showers





# First Aid and CPR Certification

The Summit **REQUIRES** each crew to have at least one-person trained in CPR and Wilderness First Aid or the equivalent for the following Trek programs:

- Polaris ATV Experience
- New River Experience
- Bikepacking Experience
- Pack and Paddle Experience

**Alternatives:** The Summit will accept the following advance levels of training. A copy of the current license or certification must be shared with The Summit during the registration process:

- Wilderness First Responder
- Outdoor Emergency Care
- EMT Basic, Intermediate, or Paramedic
- Military Corpsman or Medic
- Registered Nurse
- Licensed Nurse Practitioner
- Licensed Physician's Assistant
- Licensed Physician, MD or DO

# Health and Medical Record & Immunization Update

- Every camper and advisor is required to have a medical evaluation within twelve (12) months of their participation date by a physician licensed to practice medicine.
- These forms are available at: <http://www.scouting.org/scoutsource/HealthandSafety/ahmr.aspx>. There you will find forms for each National High Adventure Base, be sure to download The Summit form

## IMMUNIZATION UPDATE

- Verification is required that adequate tetanus immunization has been given within the last ten years prior to arrival at The Summit. If this service must be performed at The Summit, the participant will be charged accordingly.
- **RELIGIOUS BELIEFS AND MEDICAL CARE** The following is the policy of the Boy Scouts of America regarding medical requirements: Medical examinations for camp attendance are required of all campers for the protection of the entire camp group. The immunization requirement is waived for persons with religious beliefs against immunization.
- Go to the following link to download the Immunization Waiver Form and bring the completed for with your medical form. <https://filestore.scouting.org/filestore/pdf/680-451.pdf>



# Physical Preparation - Things to Do

- The programs at the Paul R. Christen National High Adventure Base are designed as HIGH ADVENTURE programs.
  - There will be a challenging physical aspect to all programs.
  - Start preparation now.
  - Carry a day pack with at least 15 lbs.
  - If possible, hike on hilly terrain.
  - Running, biking and other aerobic exercise will help prepare you as well.
  - If you live in a cold climate or in very flat terrain investigate utilizing a local arena for a warm and/or a way to simulate hilly terrain.
- 
- **NOTE:** If you do not currently meet the BMI standard outlined on the Summit Medical Form consult with your Doctor on a healthy and safe plan for weight loss.



# Summit Staff

- Experienced Adult Instructors
- Problem-Solving Support Staff
- Education & Safety Oriented
- Passionate in Their Fields
- Fun & Engaging Personalities



# Seasonal Staff Opportunities & Employment Information

## Now Accepting Applications For 2022 Seasonal Staff!

The Summit Bechtel Reserve (SBR) is currently seeking seasonal staff to operate and support its 2022 summer programs and “shoulder” seasons. Positions are varied and include overall camp support in addition to specializations within each of our three main operational areas: The Paul R. Christen National High Adventure Base; The James C. Justice National Scout Camp; The John D. Tickle National Training & Leadership Center.



**Be a part of something big – we need your help to give our guests the best experience of their lives! Don't Delay, Apply Today!**

<https://www.summitbsa.org/jobs/>

# Planning Guides <https://www.summitbsa.org/guides>



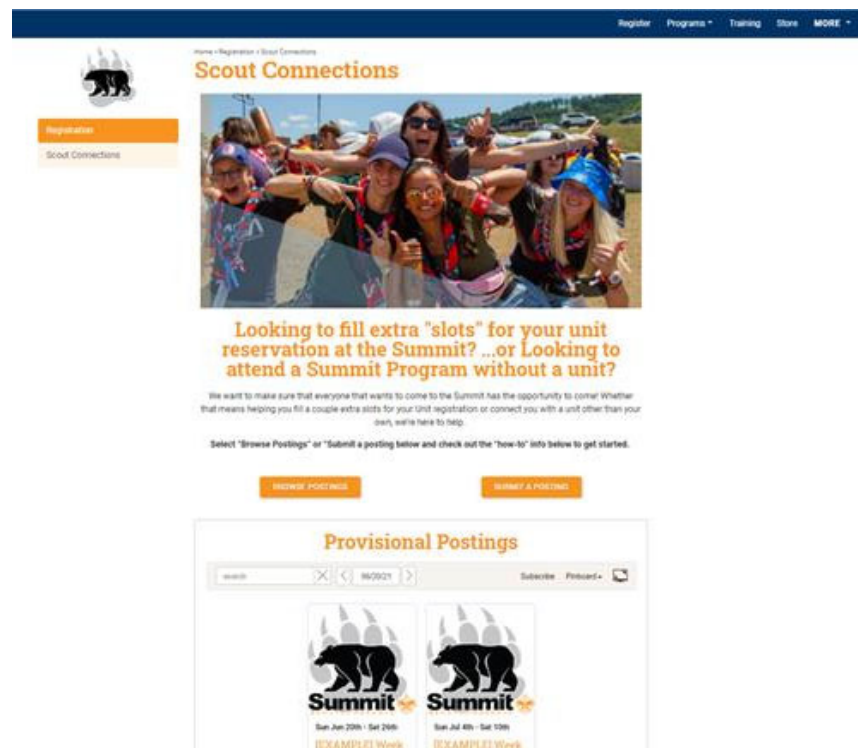
**Summit**  
HIGH ADVENTURE EXPERIENCES



# Scout Connections

- Have extra room for provisional Scouts?
- Have a Scout who can't attend with your unit, but wants to go to camp?
- Post your units willingness to host or have a parent post their desire to attend a different week of camp.

[www.summitbsa.org/scoutconnections](http://www.summitbsa.org/scoutconnections)





# Payment Information

## FEE SCHEDULE

**Deposit**                      **\$250.00 deposit due upon registration**

- **1st Payment – December 1, 2020**                      **10% of remaining fees due or within 30 days of registration if after December 1**
- **2nd Payment – November 1, 2021**                      **50% of remaining fees due**
- **Final Payment – 90 days prior to arrival**                      **Balance of remaining fees due**

Camperships - We begin taking applications in early 2022 for our 2022 event dates.

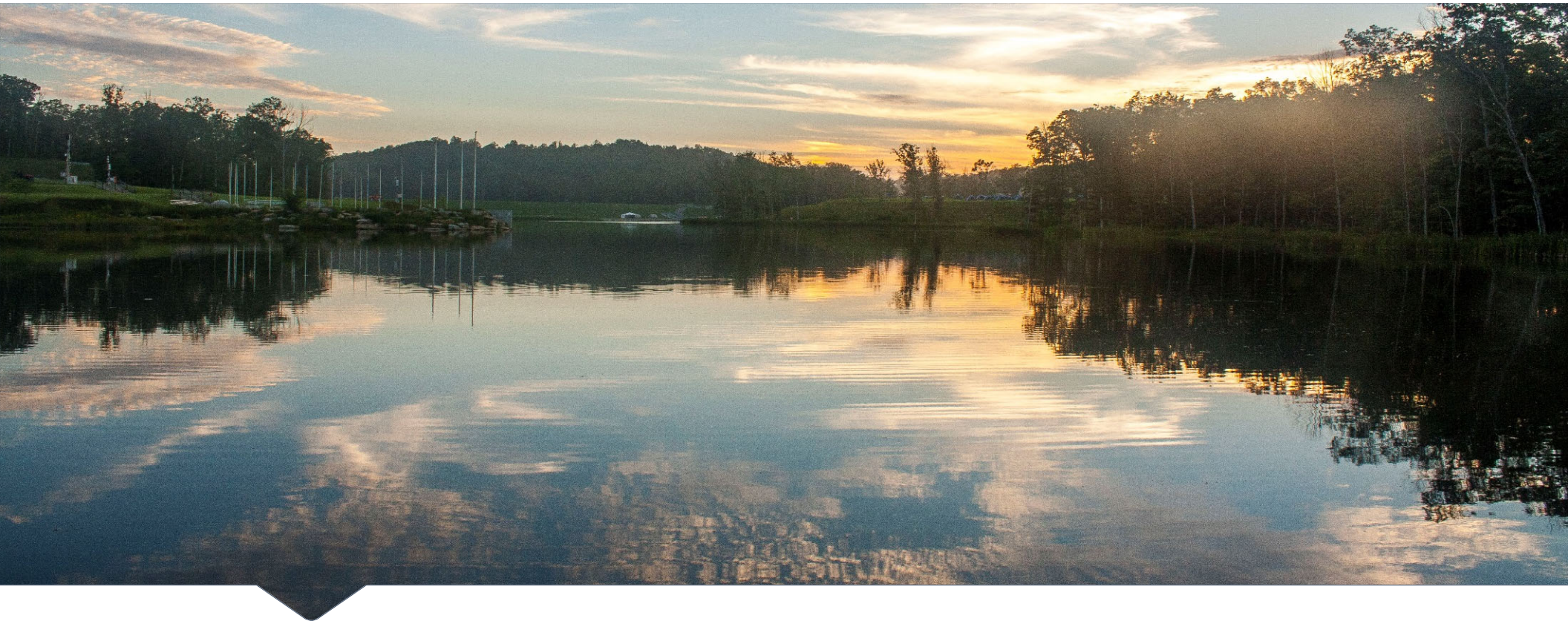
<https://reservations.scouting.org/profile/form/index.cfm?PKformID=0x112025abcd>

# Referral Program

- Are you coming to the Summit in 2022?
- Refer 5 units to attend SBR in 2022 and we'll give your unit a \$250.00 discount off your crew's overall fee.







## **Q & A Session**

To Send a question click on “Chat” at the bottom of the screen in the Webinar tool bar. This activates the Chat Function. Then type your question. Please send questions to “everyone.”



# Webinar Dates

- **Summit Experience**
  - 3<sup>rd</sup> Wednesday at 7:00pm EST – February, March & April
- **River Experience**
  - 3<sup>rd</sup> Wednesday at 8:00pm EST – February, March & April
- **Polaris ATV Experience**
  - 3<sup>rd</sup> Monday at 7:00pm EST – March & April
- **Bikepacking Experience**
  - 3<sup>rd</sup> Monday at 8:00pm EST – March & April
- **Pack and Paddle Experience**
  - 3<sup>rd</sup> Thursday at 7:00pm EST – February, March & April
- **Marksman Experience**
  - 3<sup>rd</sup> Thursday at 8:00pm EST – February, March and April



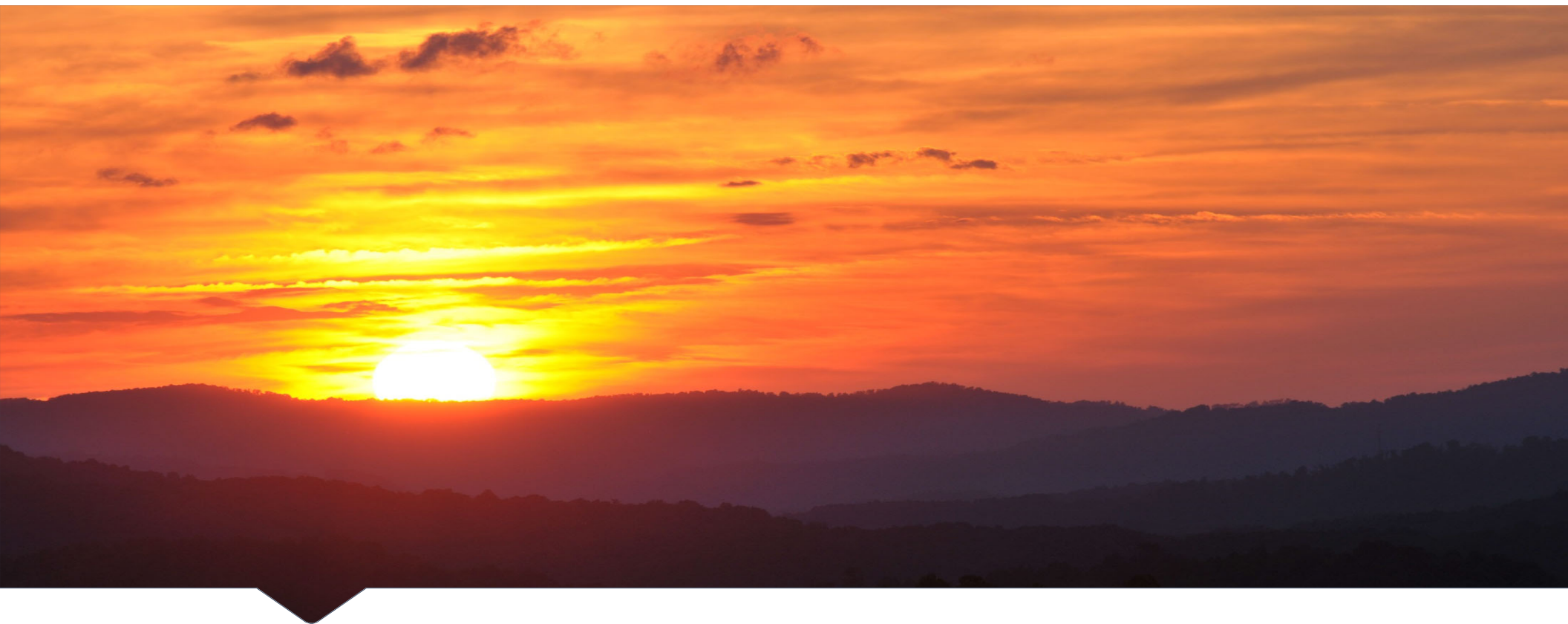
Get ready for adventure with  
Custom Gear + other great stuff swag!



SCAN ME

- [gardengroundoutfitters.com](http://gardengroundoutfitters.com)
- [store.summitbsa.org](http://store.summitbsa.org)





**For More Information:**  
[SummitBSA.org](http://SummitBSA.org)

The Summit Bechtel Family National Scout Reserve  
2550 Jack Furst Drive  
Glen Jean, WV 2846  
304-465-2800  
[Summit.program@Scouting.org](mailto:Summit.program@Scouting.org)