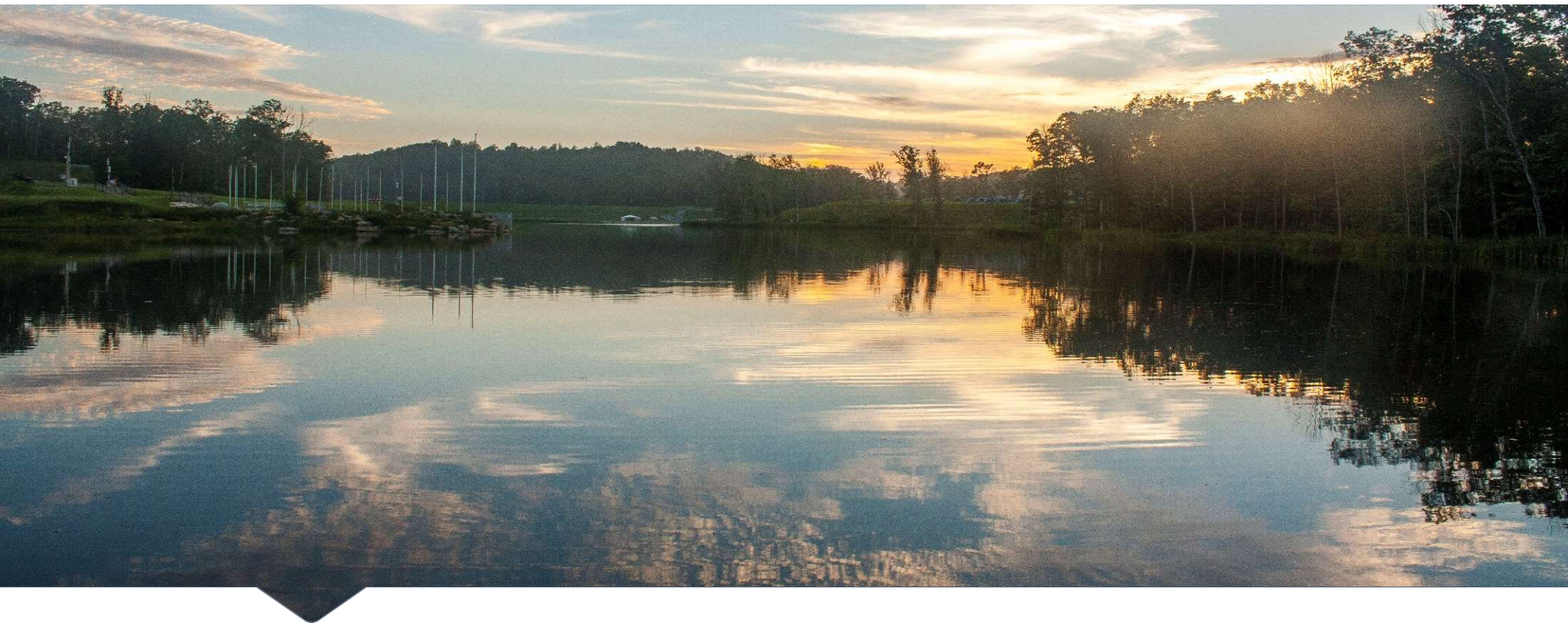


Welcome to the Summit Bechtel Reserve

Updated: 10/19/2022





Q & A Session

To Send a question click on “Chat” at the bottom of the screen in the Webinar tool bar. This activates the Chat Function. Then type your question. Please send questions to “everyone.”

Get ready for adventure with Custom Gear + other Summit swag!



- gardengroundoutfitters.com
- store.summitbsa.org

What is the Summit Bechtel Reserve?

High Adventure Base

- Skill Development
- Challenge
- Confidence-Building



Scout Camp

- Activity Exploration
- Advancement
- Scouting Traditions



Training & Leadership Center

- Unit/Council Support
- Credentials & Qualifications
- Subject Mastery



Family Adventure Camp

- Family Centric
- Fun & Excitement
- Exploration



Covid-19 Update

COVID-19 Operational Adaptations

- Summit representatives are in close contact with state and local health officials to review the SBR COVID-19 mitigation and operating plan. We will obtain their suggestions and input and operate within state guidelines.
- We will continue to refine the plan. However, please expect the following or something similar to be part of your 2023 camp experience:
 - A pre-screening process that takes place over several days before you depart for camp.
 - A re-screening upon arrival at camp.
- We are consistently reviewing each activity utilizing CDC guidelines and the State of West Virginia Guidelines to determine how to operate each activity within the guidelines currently available.
- Procedures will be updated to keep participants safe
- Details on operations of the Summit can be found at www.summitbsa.org/newnormal



The Paul R. Christen National High Adventure Base

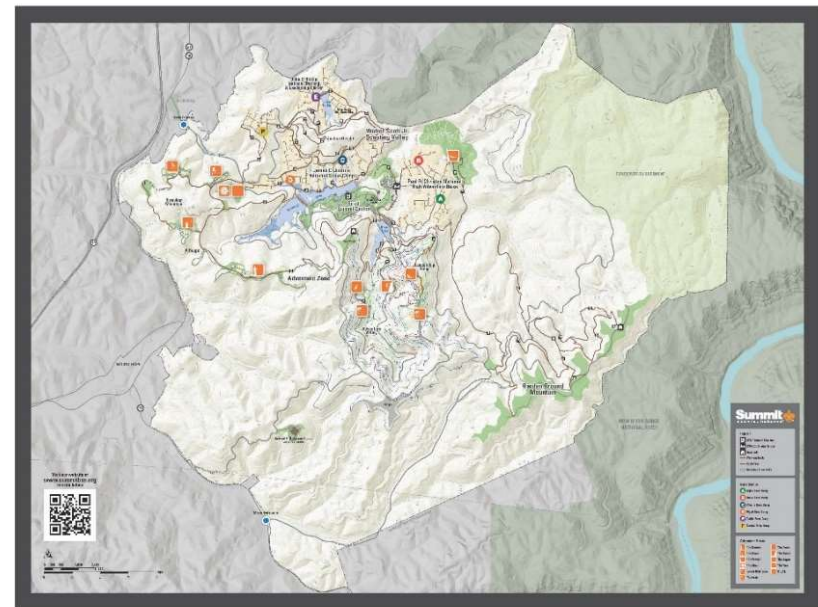


- Using Adventure Sports and Experiences to build:
 - Competence
 - Confidence
 - Connections
 - Caring
 - Character

Program Facilities

High Adventure Program Venues

- The Park- Skateboarding
- The Trax- BMX
- The Barrels- Shooting Sports
- The Rocks- Rock Climbing/Repelling/Leap of Faith
- Hunters Hall
- The Canopy- Zip Line Canopy Tours
- Low Gear – Mountain Biking
- Goodrich Lake West - Kayaking, SUP, Water Reality
- Big Zip- 3100 foot zipline
- New River Gorge- Whitewater Rafting



High Adventure Experiences

On-site Experience

- Summit Experience

Trek Experiences

- New River Experience
- Polaris ATV Experience
- Bikepacking Experience
- Marksman Experience
- Pack N' Paddle Experience

Order of the Arrow

- OASE - <https://oa-bsa.org/high-adventure/our-adventures/oa-summit-experience>



Slide 9

MR1 [@Walter Lester] [@Isaac Colvard] all my updates are complete i think?
Matthew Reineck, 10/8/2021

High Adventure @ The Summit- Summit Experience

- Summit Experience - A little bit of everything!

- Participants will spend a half day in high adventure program areas
- A great way to get an introduction to a wide range of adventure sports
- Groups will camp at Basecamp Bravo
- Utilize the venues on site for a thrilling week
- Evening Programs in Summit Center & Action Point
- A ½ day whitewater rafting trip is included no extra fee.
- <https://www.summitbsa.org/programs/national-high-adventure-base/summit-experience/>



Sample Schedule Summit Experience

Summit Experience- ½ day High Adventure Activities

	SUN	MON	TUES	WED	THURS	FRI	SAT
AM	ARRIVE	THE CANOPY/ BIG ZIP	LASER-SHOT SKILLS CENTER	ARCHERY/ THE BARRELS	THE PARK	GOODRICH LAKE OR WHITewater RAFTING	DEPART
PM	ARRIVE	THE ROCKS	LOW GEAR	FIREARMS/ THE BARRRELS	THE TRAX	GOODRICH LAKE	
EVE	OPENING PROGRAM	SUMMIT CENTER ACTIVITIES				CLOSING PROGRAM	

Slide 11

WL1 [@Isaac Colvard] SE Schedule updated
Walter Lester, 10/7/2021

The New River Experience

- 4 days of “duckie” Kayaking on class I to III rapids
- 1 day of whitewater rafting on class I to IV+ rapids
- Four nights of camping in the gorge.
- 50+ mile Experience
- All necessary program equipment provided. Bring your clothes, sleeping bag, sleeping pad and a mess kit and you are ready to go!
- Reservations are made by the boat. 1 boat = up to 8 people. A 9th person can be added for an additional fee.
- <https://www.summitbsa.org/programs/national-high-adventure-base/trek/new-river-trek/>



Summit
HIGH ADVENTURE EXPERIENCES

The Polaris ATV Experience

- 4 days of ATV trekking on the Summit property
- Friday the group will select an elective
- Fun on the trails and in the mud
- Reservations are made by the crew which can accommodate 8 – 12 people
- Crew is comprised of 8 people, additional people added at additional price
- Max group size is 12
- <https://www.summitbsa.org/programs/national-high-adventure-base/trek/atv-trek/>



Summit
HIGH ADVENTURE EXPERIENCES

Bikepacking Experience

- Ride from The Summit through the New River Gorge
- Pack your equipment on your bike
- We provide the program equipment
- 50+ miles
- <https://www.summitbsa.org/programs/national-high-adventure-base/trek/bikepacking/>



Pack N Paddle Experience

- A challenging 50-mile trek through time
- Let us share our history and our scenic countryside with you
- Carry what you need and live remote from others for self enrichment
- Make connections with others without the hindrance of technology
- Full Day Whitewater Rafting on the New River class I – IV+ rapids.
- Crew size Minimum of 8 and Maximum of 15 per experience
- <https://www.summitbsa.org/programs/national-high-adventure-base/trek/packnpaddle>



Summit
HIGH ADVENTURE EXPERIENCES

Marksman Experience

- 4 days of shooting sports activities and instructions.
- Rifle, shot gun, pistol (must be 14 and up for pistol)
- Archery, 3-D archery, sporting arrows and crossbow.
- <https://www.summitbsa.org/programs/national-high-adventure-base/trek/marksman>



Camping Facilities

HA at The Summit

- Dome Tents
- Cots
- Dinning Flies
- Picnic Tables
- Ambient Temperature Shower houses



New River Gorge / Backcountry Experiences

- Dome Tents
- No cots- Bring a ground pad
- Dinning Flies
- Latrines
- No showers



First Aid and CPR Certification

The Summit **REQUIRES** each crew to have at least one-person trained in CPR and Wilderness First Aid or the equivalent for the following Trek programs:

- Polaris ATV Experience
- New River Experience
- Bikepacking Experience
- Pack and Paddle Experience

Alternatives: The Summit will accept the following advance levels of training. A copy of the current license or certification must be shared with The Summit during the registration process:

- Wilderness First Responder
- Outdoor Emergency Care
- EMT Basic, Intermediate, or Paramedic
- Military Corpsman or Medic
- Registered Nurse
- Licensed Nurse Practitioner
- Licensed Physician's Assistant
- Licensed Physician, MD or DO

Health and Medical Record & Immunization Update

- Every camper and advisor is required to have a medical evaluation within twelve (12) months of their participation date by a physician licensed to practice medicine.
- These forms are available at: <http://www.scouting.org/scoutsource/HealthandSafety/ahmr.aspx>. There you will find forms for each National High Adventure Base, be sure to download The Summit form

IMMUNIZATION UPDATE

- Verification is required that adequate tetanus immunization has been given within the last ten years prior to arrival at The Summit. If this service must be performed at The Summit, the participant will be charged accordingly.
- **RELIGIOUS BELIEFS AND MEDICAL CARE** The following is the policy of the Boy Scouts of America regarding medical requirements: Medical examinations for camp attendance are required of all campers for the protection of the entire camp group. The immunization requirement is waived for persons with religious beliefs against immunization.
- Go to the following link to download the Immunization Waiver Form and bring the completed for with your medical form. <https://filestore.scouting.org/filestore/pdf/680-451.pdf>



Physical Preparation - Things to Do

- The programs at the Paul R. Christen National High Adventure Base are designed as HIGH ADVENTURE programs.
 - There will be a challenging physical aspect to all programs.
 - Start preparation now.
 - Carry a day pack with at least 15 lbs.
 - If possible, hike on hilly terrain.
 - Running, biking and other aerobic exercise will help prepare you as well.
 - If you live in a cold climate or in very flat terrain investigate utilizing a local arena for a warm and/or a way to simulate hilly terrain.
-
- **NOTE:** If you do not currently meet the BMI standard outlined on the Summit Medical Form consult with your Doctor on a healthy and safe plan for weight loss.

James C. Justice
**NATIONAL
SCOUT
CAMP**



Updated: 10/19/2022

Program Options

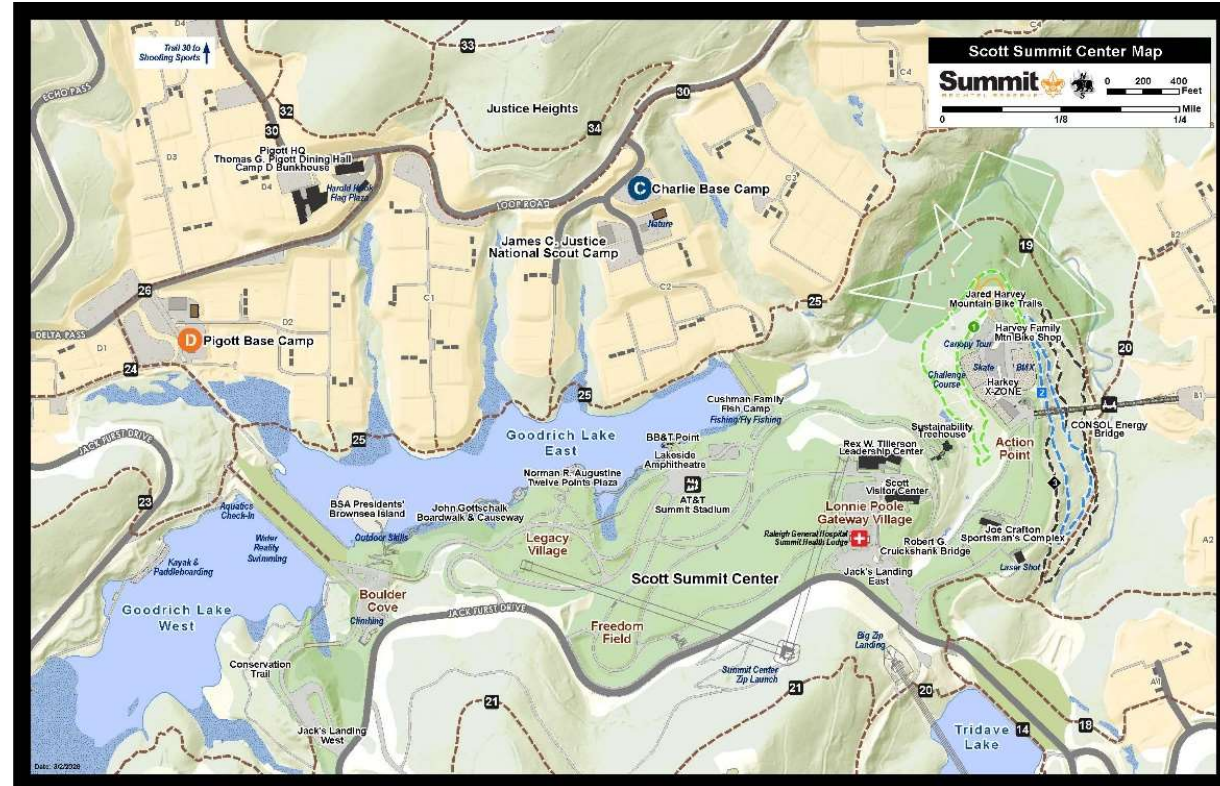
Justice Scout Camp

- Week-long Resident Camp Experience
- Advancement, Open Program & Events
- Camping equipment Provided
- Open to any registered member of the Boy Scouts of America
- No age or rank requirements



Program Facilities

- Action Point
- Ziplining
- Boulder Cove
- Brown Sea Island
- Goodrich Lake
- Nature Pavilion
- New River Gorge National River
- Outdoor Skills
- Shooting Ranges
- Sustainability Treehouse
- STEM Classrooms



Boy Scout Advancement Opportunities

Merit Badges (40+)

Eagle Required (9)

- Archaeology
- Archery
- Astronomy
- Bird Study
- **Camping**
- Canoeing
- Chemistry
- Chess
- Climbing
- **Communications**
- **Emergency Preparedness**
- Engineering
- **Environmental Science**
- **First Aid**
- Fish & Wildlife Management
- Fishing
- Fly Fishing
- Game Design
- Geology
- **Hiking**
- Kayaking
- Leatherworking
- **Lifesaving**
- Mammal Study
- Movie Making
- Nuclear Science
- Oceanography
- Orienteering
- Photography
- Pioneering
- Plant Sciences
- Rifle Shooting
- Rowing
- Search & Rescue
- Shotgun Shooting
- Sign, Signals, & Codes
- Space Exploration
- **Sustainability**
- **Swimming**
- Whitewater
- Wilderness Survival



Other Award Opportunities

- Kayaking BSA
- BSA Stand Up Paddleboarding Award
- Mile Swim BSA
- Whitewater Rafting BSA
- Hunter's Education Certification Course (good in your home state)
- Summit Survival Challenge
- Leave No Trace Trainer
- Duty to God Award
- Summit Sustainability Award
- Note: SC cannot be applied to the Triple Crown or Grand Slam award



Camp-Wide Events

- Opening/Closing Campfires
- Appalachian “Celebrachian”
 - Live Music
 - Field Games
 - Vendors & Exhibits
 - Dutch Oven Cookoffs
 - International Exhibit
- Religious Services
- Other Competitions & Special Events



Camping Facilities

Equipment/Facilities

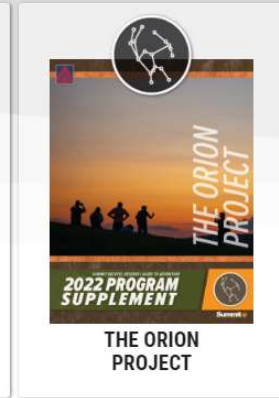
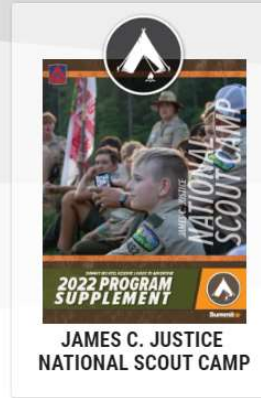
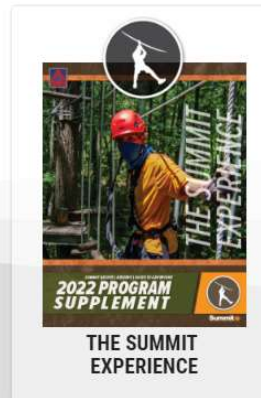
- Dome Tents – Rental Fee \$15.00
- Cots
- Dining Flies
- Picnic Tables
- Above-Ground Fire Ring
- “Ambient-Temperature” Shower House
 - Flush Toilets
 - Mirrors, Sinks & Potable Water
- AT&T Wi-Fi



Dining Hall Facilities



Planning Guides <https://www.summitbsa.org/guides>



Summit
HIGH ADVENTURE EXPERIENCES

Summit Staff

- Experienced Adult Instructors
- Problem-Solving Support Staff
- Education & Safety Oriented
- Passionate in Their Fields
- Fun & Engaging Personalities



Seasonal Staff Opportunities & Employment Information

Now Accepting Applications For 2023 Seasonal Staff!

The Summit Bechtel Reserve (SBR) is currently seeking seasonal staff to operate and support its 2023 summer programs and “shoulder” seasons. Positions are varied and include overall camp support in addition to specializations within each of our three main operational areas: The Paul R. Christen National High Adventure Base; The James C. Justice National Scout Camp; The John D. Tickle National Training & Leadership Center.

Be a part of something big – we need your help to give our guests the best experience of their lives! Don't Delay, Apply Today!

<https://www.summitbsa.org/jobs/>



Scout Connections

- Have extra room for provisional Scouts?
- Have a Scout who can't attend with your unit, but wants to go to camp?
- Post your units willingness to host or have a parent post their desire to attend a different week of camp.

www.summitbsa.org/scoutconnections





Payment Information

FEE SCHEDULE

- **Deposit-** \$250 deposit due upon registration
- **1st Payment-** 10% of remaining fees due 3/1/2022 or within 30 days of registration if after 3/1/2022
- **2nd Payment-** 50% of remaining fees due 11/1/2022 or within 30 days of registration if after 11/1/2022
- **Final Payment-** Balance of remaining fees 90 days prior to arrival
- ***PAID FEES ARE NON-REFUNDABLE.***



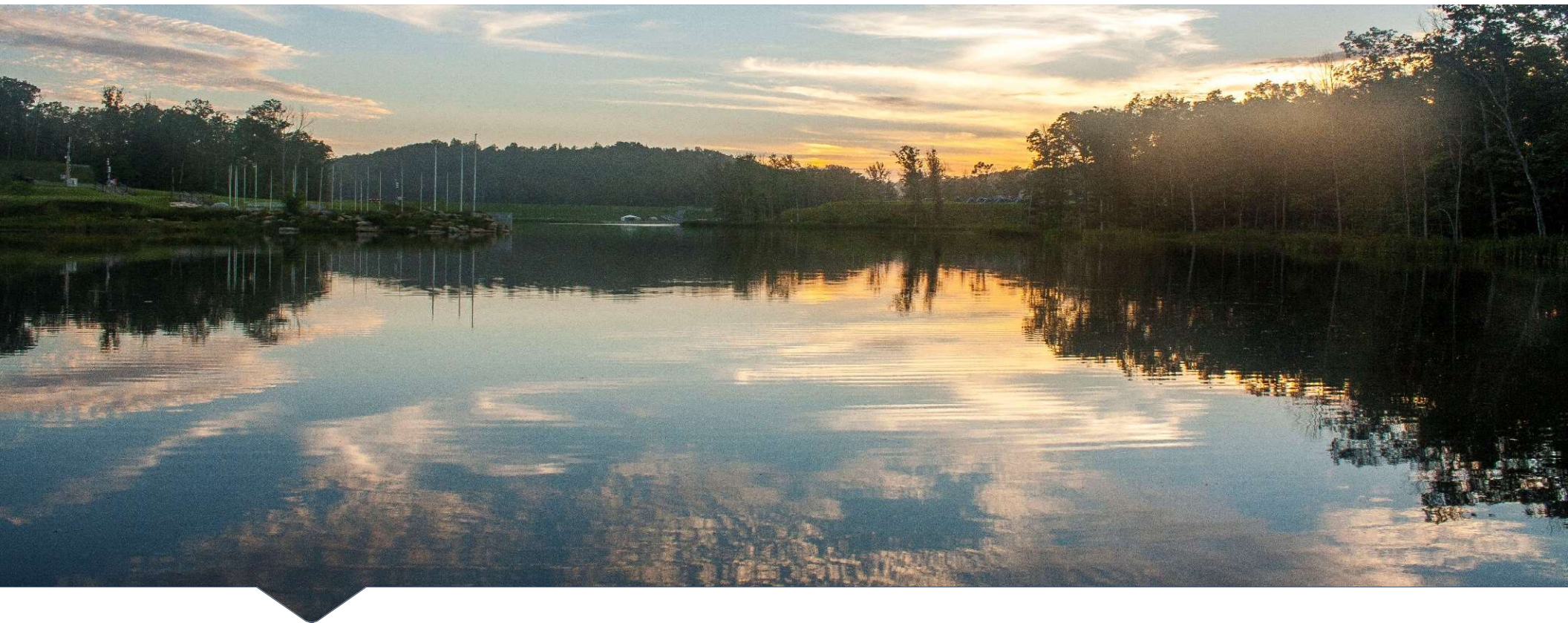
Webinar Dates

- **Summit Experience**
 - 3rd Wednesday at 7:00pm EST – February, March & April
- **River Experience**
 - 3rd Wednesday at 8:00pm EST – February, March & April
- **Polaris ATV Experience**
 - 3rd Monday at 7:00pm EST – March & April
- **Bikepacking Experience**
 - 3rd Monday at 8:00pm EST – March & April
- **Pack and Paddle Experience**
 - 3rd Thursday at 7:00pm EST – February, March & April
- **Marksman Experience**
 - 3rd Thursday at 8:00pm EST – February, March and April
- **Scout Camp**
 - 4th Tuesday at 7:00pm EST – January, February, March, April, Pre-Camp

Get ready for adventure with Custom Gear + other Summit swag!

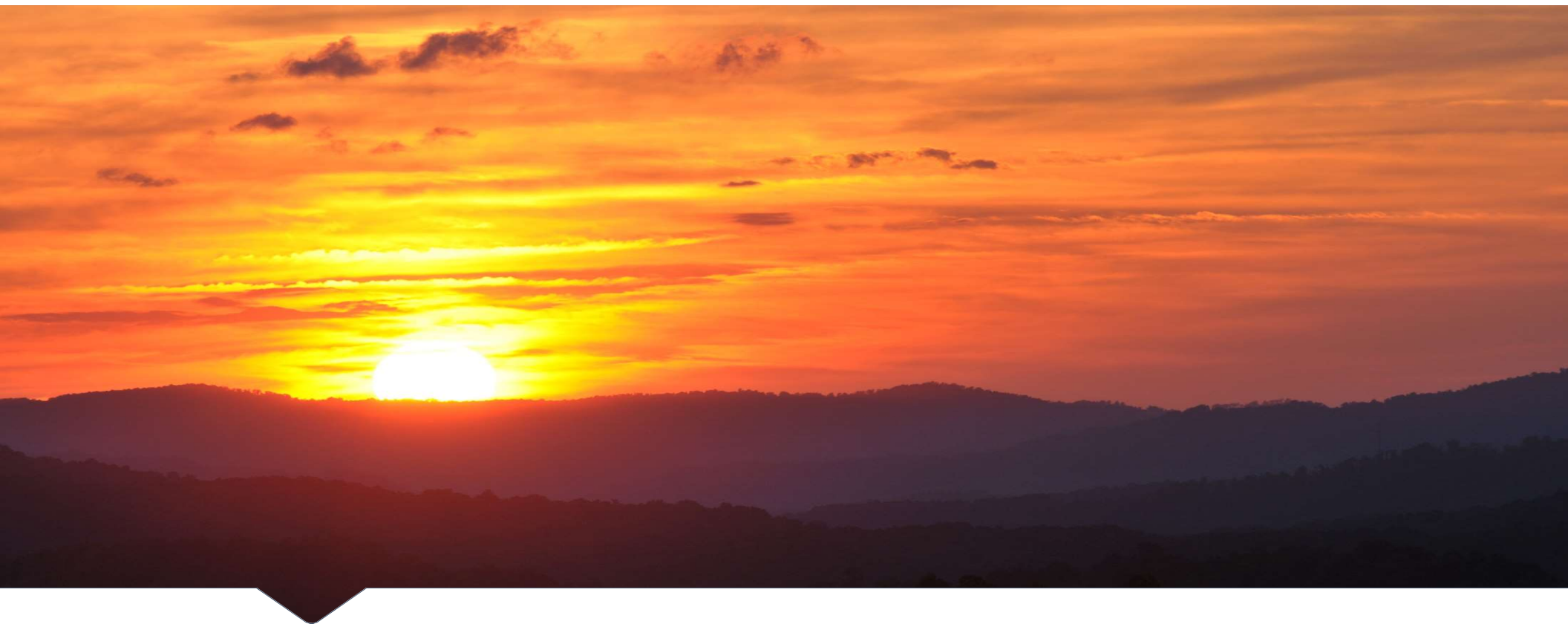


- gardengroundoutfitters.com
- store.summitbsa.org



Q & A Session

To Send a question click on “Chat” at the bottom of the screen in the Webinar tool bar. This activates the Chat Function. Then type your question. Please send questions to “everyone.”



For More Information:
SummitBSA.org

The Summit Bechtel Family National Scout Reserve
2550 Jack Furst Drive
Glen Jean, WV 2846
304-465-2800
Summit.program@Scouting.org